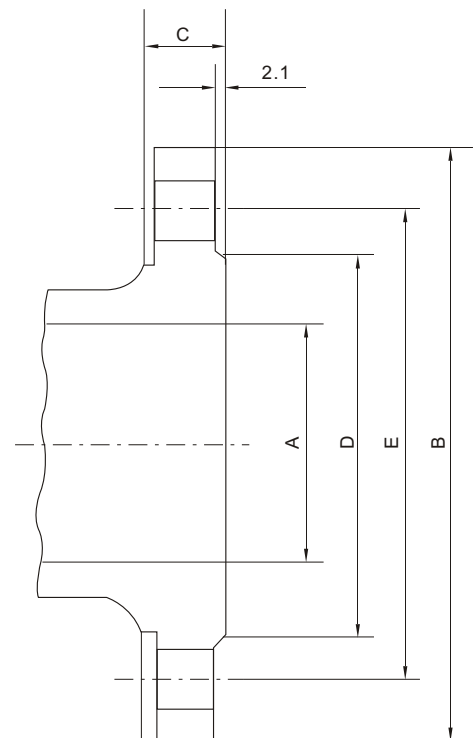


Nominal size	Bore A	Outside Dia B	Thickness of Flange C	Raised face Dia. D	Dia of bolt circle E	Number of bolt holes	Dia of bolt
<b>Class 150.RF</b>							
1-1/2 "	38.1	127	17.5	73	98.4	4	1/2 "
2 "	50.8	152.4	19.1	92.1	120.7	4	5/8 "
2-1/2 "	63.5	177.8	22.2	104.8	139.7	4	5/8 "
3 "	76.2	190.5	23.8	127	152.4	4	5/8 "
4 "	101.6	228.6	23.8	157.2	190.5	8	5/8 "
5 "	127	254	23.8	185.7	215.9	8	3/4 "
6 "	152.4	279.4	25.4	215.9	241.3	8	3/4 "
8 "	203.2	342.9	28.6	269.9	298.5	8	3/4 "
10 "	254	406.4	30.2	323.9	362	12	7/8 "
12 "	304.8	482.6	31.8	381	431.8	12	7/8 "
14 "	336.6	533.4	34.9	412.8	476.3	12	1 "
16 "	387.4	596.9	36.5	469.9	539.8	16	1 "
18 "	438.2	635	39.7	533.4	577.9	16	1-1/8 "
20 "	489	698.5	42.9	584.2	635	20	1-1/8 "
24 "	590.6	812.8	47.7	692.2	749.3	20	1-1/4 "
26 "	635	869.9	68.3	749.3	806.4	24	1-3/8 "
28 "	685.8	927.1	71.1	800.1	863.6	28	1-3/8 "
30 "	736.6	984.2	74.7	857.2	914.4	28	1-3/8 "
32 "	781.1	1060.4	80.8	914.4	977.9	28	1-5/8 "
34 "	831.9	1111.2	82.5	965.2	1028.7	32	1-5/8 "
36 "	876.3	1168.4	90.4	1022.3	1085.8	32	1-5/8 "
38 "	927.1	1238.2	87.4	1073.1	1149.3	32	1-5/8 "
40 "	977.9	1289	90.4	1123.9	1200.1	36	1-5/8 "
42 "	1022.4	1346.2	96.8	1193.8	1257.3	36	1-5/8 "
<b>Class 300.RF</b>							
1-1/2 "	38.1	155.6	20.6	73	114.3	4	3/4 "
2 "	50.8	165.1	22.2	92.1	127	8	5/8 "
2-1/2 "	63.5	190.5	25.4	104.8	149.2	8	3/4 "
3 "	76.2	209.5	28.6	127	168.3	8	3/4 "
4 "	101.6	254	31.8	157.2	200	8	3/4 "
5 "	127	279.4	34.9	185.7	235	8	3/4 "
6 "	152.4	317.5	36.5	215.9	269.9	12	3/4 "
8 "	203.2	381	41.3	269.9	330.2	12	7/8 "
10 "	254	444.5	47.6	323.9	387.4	16	1 "
12 "	304.8	520.7	50.8	381	450.9	16	1-1/8 "
14 "	336.6	584.2	54	412.8	514.4	20	1-1/8 "
16 "	387.4	647.7	57.2	469.9	571.5	20	1-1/4 "
18 "	431.8	711.2	60.3	533.4	628.7	24	1-1/4 "
20 "	482.5	774.7	63.5	584.2	685.8	24	1-1/4 "
22 "	533.4	838.2	66.5	641.4	743	24	1-1/2 "
24 "	534.2	914.4	69.9	692.2	812.8	24	1-1/2 "
26 "	635	971.5	79.2	749.2	876.3	28	1-3/4 "
28 "	685.8	1035	85.5	800.1	939.8	28	1-3/4 "
30 "	736.6	1092.2	91.9	857.2	996.9	28	1-7/8 "
32 "	781.1	1149.3	98.5	914.4	1054.1	28	2 "
34 "	819.9	1206.5	101.6	965.2	1104.9	28	2 "
36 "	876.3	1270	104.6	1022.3	1168.4	32	2-1/8 "
38 "	927.1	1168.4	107.9	1028.7	1092.2	32	1-5/8 "
40 "	977.9	1238.2	114.3	1085.8	1155.7	32	1-3/4 "
<b>Class 600.RF</b>							
1-1/2 "	38.1	155.6	22.2	730	114.3	4	3/4 "
2 "	50.8	165.1	25.4	92.1	127.0	8	5/8 "
2-1/2 "	63.5	190.5	28.6	104.8	149.2	8	3/4 "
3 "	76.2	209.5	31.8	127.0	168.3	8	3/4 "

Integral Steel Flanges for Valves  
 1-1/2 " ~24 " : ANSI B16.5 1981  
 BS 1560 1958  
 >24 " : MSS SP-44 1991



Class 150/300 RF