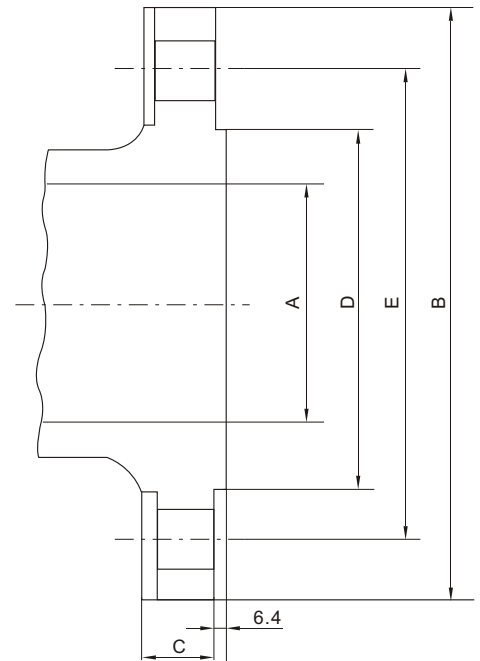


| Nominal size | Bore A | Outside Dia B | Thickness of Flange C | Raised face Dia. D | Dia of bolt circle E | Number of bolt holes | Dia of bolt |
|----------------------|--------|---------------|-----------------------|--------------------|----------------------|----------------------|-------------|
| Class 600 RF | | | | | | | |
| 4 " | 101.6 | 273.1 | 38.1 | 157.2 | 215.9 | 8 | 7/8 " |
| 5 " | 127.0 | 330.2 | 44.5 | 185.7 | 266.7 | 8 | 1 " |
| 6 " | 152.4 | 355.6 | 47.6 | 215.9 | 292.1 | 12 | 1 " |
| 8 " | 200.0 | 419.1 | 55.6 | 269.9 | 349.3 | 12 | 1-1/8 " |
| 10 " | 247.7 | 508.0 | 63.5 | 323.9 | 431.8 | 16 | 1-1/4 " |
| 12 " | 298.5 | 558.8 | 66.7 | 371.0 | 489.0 | 20 | 1-1/4 " |
| 14 " | 327.0 | 603.3 | 69.9 | 412.8 | 527.1 | 20 | 1-3/8 " |
| 16 " | 374.7 | 685.8 | 76.2 | 469.9 | 603.3 | 20 | 1-1/2 " |
| 18 " | 719.1 | 743.1 | 82.6 | 533.4 | 654.1 | 20 | 1-5/8 " |
| 20 " | 463.6 | 812.8 | 88.9 | 584.2 | 723.9 | 24 | 1-5/8 " |
| 24 " | 558.8 | 939.8 | 101.6 | 692.2 | 838.2 | 24 | 1-7/8 " |
| 26 " | 635.0 | 1016.0 | 107.9 | 749.3 | 914.4 | 28 | 2 " |
| 28 " | 685.8 | 1073.1 | 111.2 | 800.1 | 965.2 | 28 | 2-1/8 " |
| 30 " | 736.6 | 1130.3 | 114.3 | 857.3 | 1022.3 | 28 | 2-1/8 " |
| 32 " | 784.4 | 1193.8 | 117.3 | 914.4 | 1079.5 | 28 | 2-3/8 " |
| 34 " | 831.9 | 1244.6 | 120.6 | 965.2 | 1130.3 | 28 | 2-3/8 " |
| 36 " | 876.3 | 1314.4 | 123.9 | 1022.4 | 1193.8 | 28 | 2-5/8 " |
| Class 900.RF | | | | | | | |
| 1-1/2 " | 341.8 | 177.8 | 31.8 | 73.0 | 123.8 | 4 | 1 " |
| 2 " | 47.5 | 215.9 | 38.1 | 92.1 | 165.1 | 8 | 7/8 " |
| 2-1/2 " | 57.2 | 244.5 | 41.2 | 104.8 | 190.5 | 8 | 1 " |
| 3 " | 72.9 | 241.3 | 38.1 | 127.0 | 190.5 | 8 | 7/8 " |
| 4 " | 98.3 | 292.1 | 44.5 | 157.2 | 235.5 | 8 | 1-1/8 " |
| 5 " | 120.7 | 349.3 | 50.8 | 185.7 | 279.4 | 8 | 1-1/4 " |
| 6 " | 146.1 | 381.0 | 55.6 | 215.9 | 317.5 | 12 | 1-1/8 " |
| 8 " | 190.5 | 469.9 | 63.5 | 269.9 | 393.7 | 12 | 1-3/8 " |
| 10 " | 138.0 | 546.1 | 69.9 | 323.9 | 469.9 | 16 | 1-3/8 " |
| 12 " | 282.4 | 609.6 | 79.4 | 381.0 | 533.4 | 20 | 1-3/8 " |
| 14 " | 311.2 | 641.4 | 85.7 | 412.8 | 558.8 | 20 | 1-1/2 " |
| 16 " | 355.6 | 704.9 | 88.9 | 469.9 | 616.0 | 20 | 1-5/8 " |
| 18 " | 400.1 | 787.4 | 101.6 | 533.4 | 685.8 | 20 | 1-7/8 " |
| 20 " | 444.5 | 857.3 | 108.0 | 584.2 | 749.3 | 20 | 2 " |
| 24 " | 533.4 | 1041.4 | 139.7 | 692.2 | 901.7 | 20 | 2-1/2 " |
| Class 1500.RF | | | | | | | |
| 1-1/2 " | 34.8 | 177.8 | 31.8 | 73.0 | 123.8 | 4 | 1 " |
| 2 " | 47.5 | 215.9 | 38.1 | 92.1 | 165.1 | 8 | 7/8 " |
| 2-1/2 " | 57.2 | 244.5 | 41.2 | 104.8 | 190.5 | 8 | 1 " |
| 3 " | 69.9 | 266.7 | 47.8 | 127.0 | 203.2 | 8 | 1-1/8 " |
| 4 " | 92.0 | 311.2 | 54.0 | 157.2 | 241.3 | 8 | 1-1/4 " |
| 5 " | 111.0 | 374.7 | 73.2 | 185.5 | 292.1 | 8 | 1-1/2 " |
| 6 " | 136.5 | 393.7 | 82.6 | 215.9 | 317.5 | 12 | 1-3/8 " |
| 8 " | 177.8 | 482.6 | 92.1 | 269.9 | 393.7 | 12 | 1-5/8 " |
| 10 " | 223.0 | 584.2 | 108.0 | 323.9 | 482.2 | 12 | 1-7/8 " |
| 12 " | 263.5 | 673.1 | 124.0 | 371.0 | 571.5 | 16 | 2 " |
| 14 " | 288.9 | 749.3 | 133.4 | 412.8 | 635.0 | 16 | 2-1/4 " |
| 16 " | 330.2 | 825.5 | 146.1 | 469.9 | 704.9 | 16 | 2-1/2 " |
| 18 " | 371.5 | 914.4 | 162.1 | 533.4 | 774.7 | 16 | 2-3/4 " |
| 20 " | 415.9 | 984.3 | 177.8 | 584.2 | 831.9 | 16 | 3 " |
| 24 " | 498.5 | 1168.4 | 203.2 | 692.2 | 990.6 | 16 | 3-1/2 " |
| Class 2500.RF | | | | | | | |
| 1-1/2 " | 28.6 | 203.2 | 44.5 | 73.0 | 146.1 | 4 | 1-1/8 " |
| 2 " | 37.1 | 235.0 | 50.8 | 92.1 | 171.5 | 8 | 1 " |
| 2-1/2 " | 47.6 | 266.7 | 57.2 | 104.8 | 196.9 | 8 | 1-1/8 " |
| 3 " | 57.2 | 304.8 | 66.5 | 127.0 | 228.6 | 8 | 1-1/4 " |
| 4 " | 73.0 | 355.6 | 76.2 | 157.2 | 273.1 | 8 | 1-1/2 " |
| 5 " | 92.1 | 419.1 | 92.0 | 185.7 | 323.9 | 8 | 1-3/4 " |
| 6 " | 111.1 | 482.6 | 108.0 | 215.9 | 368.3 | 8 | 2 " |
| 8 " | 146.1 | 552.5 | 127.0 | 269.9 | 438.2 | 12 | 2 " |
| 10 " | 184.2 | 673.1 | 165.1 | 323.9 | 539.8 | 12 | 2-1/2 " |
| 12 " | 219.1 | 762.0 | 184.2 | 381.0 | 619.3 | 12 | 2-3/4 " |



Class 600/900/2500 RF